

Technical sheet

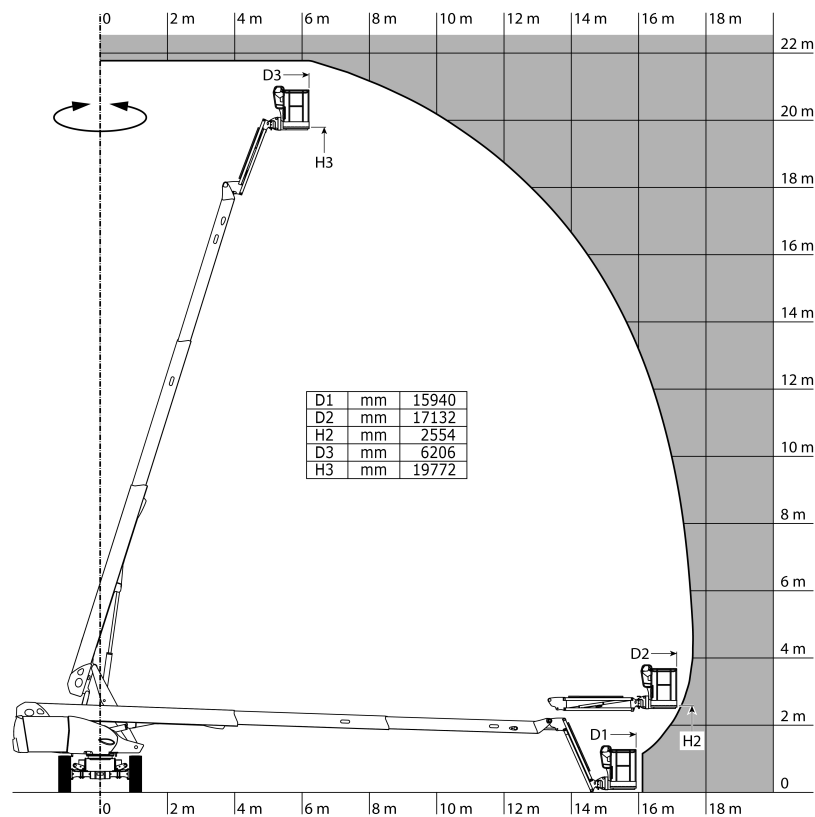
220 TJ

Aerial Work Platforms Diesel Telescopic Jib

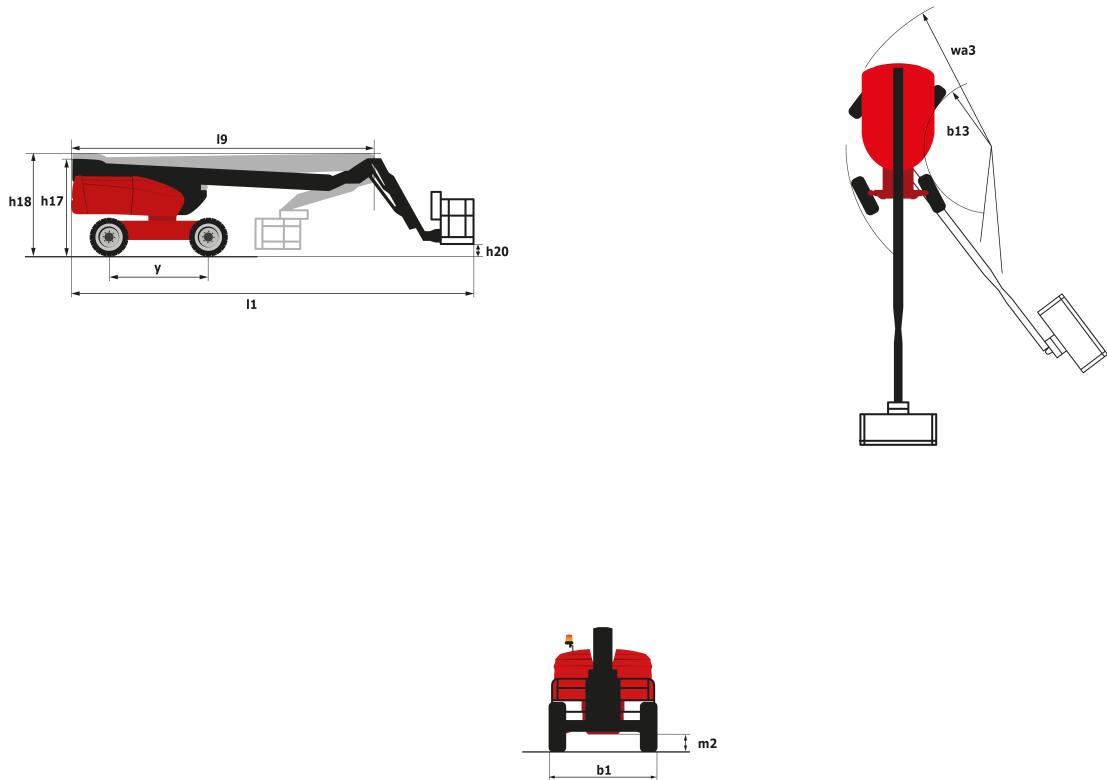


| Capacities | Metric | Imperial |
|---|-------------------------------|-------------------------------|
| Working height | 21.77 m | 71 ft 5 in |
| Platform height | 19.77 m | 64 ft 10 in |
| Horizontal outreach | 17.63 m | 57 ft 10 in |
| Pendular arm rotation (top/bottom) | 69 ° / -66 ° | 69 ° / -66 ° |
| Platform capacity | 230 kg | 507.06 lbs |
| Turret rotation | 360 ° | 360 ° |
| Platform rotation (right/left) | 90 ° / 90 ° | 90 ° / 90 ° |
| Number of people (inside/outside) | 2 / 2 | 2 / 2 |
| Weight and dimensions | | |
| 2.1 - Platform weight* | 11850 kg | 26124.77 lbs |
| 2.2 - Platform dimension (L x l) | 2.1 x 0.8 m | 6 ft 11in x 2ft 7in ft |
| b1 - Overall width | 2.48 m | 7 ft 12 in |
| l1 - Overall length | 9.80 m | 32 ft 2 in |
| l9 - Overall length (folded) | 7.29 m | 23 ft 11 in |
| h17 - Overall height | 2.47 m | 8 ft 1 in |
| h18 - Overall height (folded) | 2.72 m | 8 ft 11 in |
| h20 - Floor height (access) | 0.39 m | 1 ft 3 in |
| l13 - Pendular arm length | 2 m | 6 ft 7 in |
| a7 - Counterweight offset (turret at 90°) | 1.34 m | 4 ft 5 in |
| b13 - Inner turning radius | 2.96 m | 9 ft 9 in |
| wa3 - Outer turning radius | 6.19 m | 20 ft 4 in |
| m2 - Ground clearance at center of frame | 0.44 m | 1 ft 5 in |
| y - Wheelbase | 2.80 m | 9 ft 2 in |
| Performances | | |
| Travel speed | 4.80 km/h | 2.98 mph |
| Working speed | 1 km/h | 0.50 mph |
| Gradeability | 40 % | 40 % |
| Permissible leveling | 4 ° | 4 ° |
| Tires | | |
| Type of tires | TyresType.SolidTyres.cured-on | TyresType.SolidTyres.cured-on |
| Drive wheels (front/rear) | 2 / 2 | 2 / 2 |
| Steering wheels (front/rear) | 2 / 0 | 2 / 0 |
| Braking wheels (front/rear) | 0 / 2 | 0 / 2 |
| Engine | | |
| I.C. engine | Kubota V1505.E3B Stage 3A | Kubota V1505.E3B Stage 3A |
| I.C. Engine power rating | 45 hp / 26.20 kW | 45 hp / 26.20 kW |
| Miscellaneous | | |
| Ground pressure | 18.20 daN/cm² | 261 psi |
| Maximum available hydraulic pressure | 340 bar | 4931.28 psi |
| Capacity of hydraulic tank | 94 l | 24.83 US gal. |
| Capacity of fuel tank | 72 l | 19 US gal. |
| Vibration level | <0.50 m/s² | <0.50 in/s² |

* varies according to options and standards of the country to which the machine is delivered



Dimensional drawing



Equipment

Standard

230V Predisposition

4 simultaneous movements

4 wheel drive

Active oscillating front axle

Audible alarm and illuminated indicator lamp (leveling, overload, lowering)

Backup electrical pump

Continuous turret rotation

Differential locking on rear axle

Differential locking on rear axle

Electronic platform compensation

Emergency stop button in platform and on frame

Engine mounted on sliding platform

Front axle with limited slip

Fuel gauge with low level indicator

Fully galvanized basket with demountable floor

Hour meter

Integrated diagnostic assistance

Leveling unlocking

Management via engine speed bearing

Proportional controls

Optional

110 or 230V plug with differential circuit-breaker

Air predisposition

Beep upon travel

Biodegradable oil

Key lock on fuel tank

Basket 1,800 mm

Extreme cold oil

Onboard generator (3,5 or 5 kW)

Personalized paintwork

Screen protection on the lower box control

SMS : Safe Man System

Easy Manager

Remote control

Working light



Siège Social
430 rue de l'Aubinière - 44150 Ancenis Cedex - France
Tel: +33(0)2 40 09 10 11 - Fax: +33 (0)2 40 09 10 97
www.manitou.com



This brochure describes versions and configuration options for Manitou products which may be fitted with different equipment. The equipment described in this brochure may be standard, optional or not available depending on version. Manitou reserves the right to change the specifications shown and described at any time and without prior warning. The manufacturer is not liable for the specifications given. For more information, contact your Manitou dealer. Non-contractual document. Product descriptions may differ from actual products. List of specifications is not comprehensive. The logos and visual identity of the company are the property of Manitou and may not be used without authorisation. All rights reserved. The photos and diagrams contained in this brochure are provided for information only.

MANITOU BF SA - Limited company with board of directors - Share capital: 39,547,824 euros - 857 802 508 RCS Nantes