

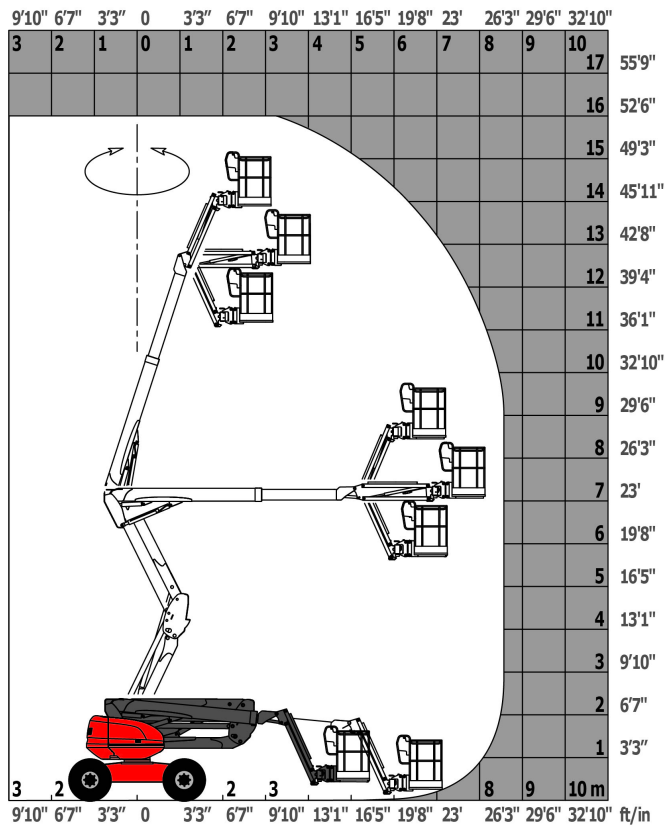
Technical sheet

160 ATJ +

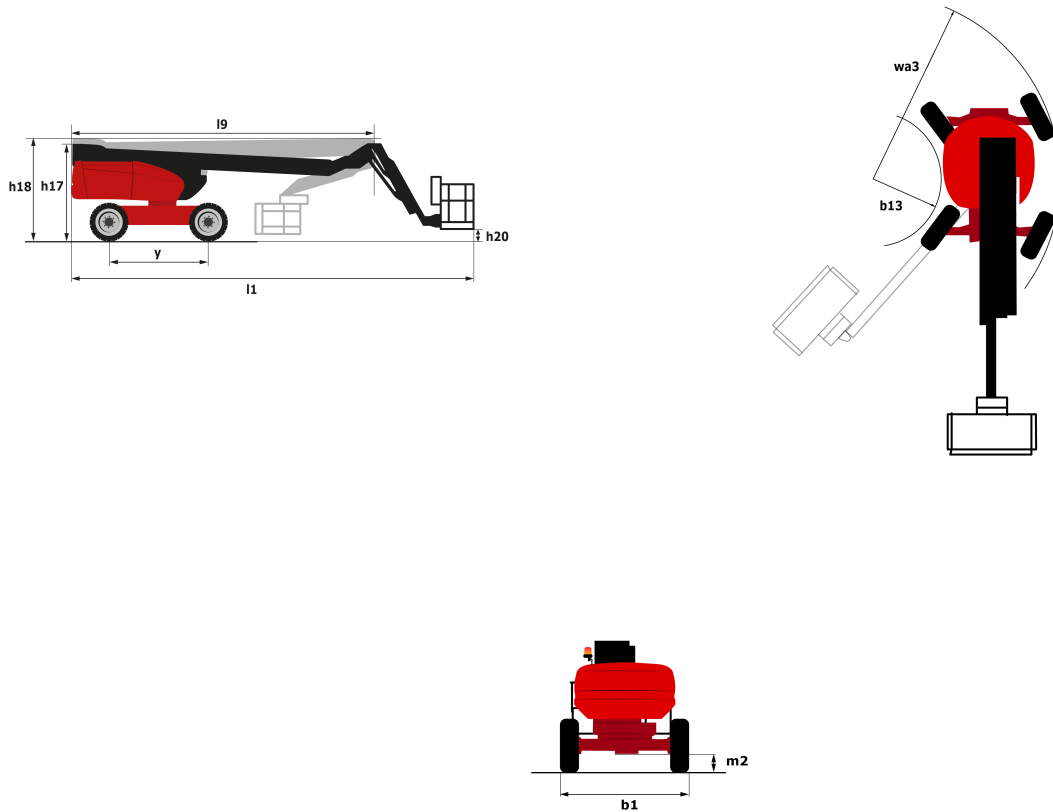
Aerial Work Platforms Diesel Articulated Jib



Capacities	Metric	Imperial
Working height	16.21 m	53 ft 2 in
Platform height	14.21 m	46 ft 7 in
Horizontal outreach	8.94 m	29 ft 4 in
Overhang	7 m	22 ft 12 in
Pendular arm rotation (top/bottom)	70 ° / 70 °	70 ° / 70 °
Platform capacity	400 kg	880 lbs
Turret rotation	350 °	350 °
Platform rotation (right/left)	90 ° / 90 °	90 ° / 90 °
Number of people (inside/outside)	3 / 3	3 / 3
Weight and dimensions		
2.1 - Platform weight*	8100 kg	17820 lbs
2.2 - Platform dimension (L x l)	2.3 x 0.9 m	7.54 x 2.95 ft
b1 - Overall width	2.30 m	7 ft 6 in
l1 - Overall length	6.92 m	22 ft 8 in
l9 - Overall length (folded)	4.82 m	15 ft 10 in
h17 - Overall height	2.37 m	7 ft 9 in
h18 - Overall height (folded)	2.70 m	8 ft 10 in
h20 - Floor height (access)	0.40 m	1 ft 4 in
a7 - Counterweight offset (turret at 90°)	0.23 m	9 in
b13 - Inner turning radius	1.32 m	4 ft 4 in
wa3 - Outer turning radius	3.66 m	12 ft
m2 - Ground clearance at center of frame	0.43 m	1 ft 5 in
y - Wheelbase	2.22 m	7 ft 3 in
Performances		
Travel speed	6 km/h	3.73 mph
Working speed	0.80 km/h	0.50 mph
Gradeability	40 %	40 %
Permissible leveling	5 °	5 °
Tires		
Type of tires	Foam-filled	Foam-filled
Drive wheels (front/rear)	2 / 2	2 / 2
Steering wheels (front/rear)	2 / 2	2 / 2
Braking wheels (front/rear)	0 / 2	0 / 2
Engine		
I.C. engine	Kubota V2403-M Stage 3A	Kubota V2403-M Stage 3A
I.C. Engine power rating	45 hp / 34.10 kW	45 hp / 34.10 kW
Miscellaneous		
Ground pressure	10.88 daN/cm ²	-
Maximum available hydraulic pressure	300 bar	4351.13 psi
Capacity of hydraulic tank	54 l	14.27 US gal.
Capacity of fuel tank	52 l	14 US gal.
Vibration level	<0.50 m/s ²	<0.50 in/s ²
Daily consumption**	7 l	1.84 US gal.



Dimensional drawing



Equipment

Standard

230V Predisposition

4 simultaneous movements

4 wheel drive

4 wheel steer with crab mode

Active oscillating front axle

Audible alarm and illuminated indicator lamp (leveling, overload, lowering)

Backup electrical pump

Basket 2,300 mm

CAN bus technology

Dead man pedal

Differential locking on rear axle

Emergency stop button in platform and on frame

Front axle with limited slip

Fuel gauge with low level indicator

Horn in the platform

Hour meter

Integrated diagnostic assistance

Large basket with three entries

Leveling unlocking

Management via engine speed bearing

Optional

20" tyres

110 or 230V plug with differential circuit-breaker

Additional storage boxes

Air predisposition

Beep on every movement

Beep upon travel

Biodegradable oil

Catalytic cleaner

Coded anti-start

Continuous turret rotation

Highly efficient battery

Initial verification report before putting into service

Lockable fuel cap

Non-marking tyres

Extreme cold oil

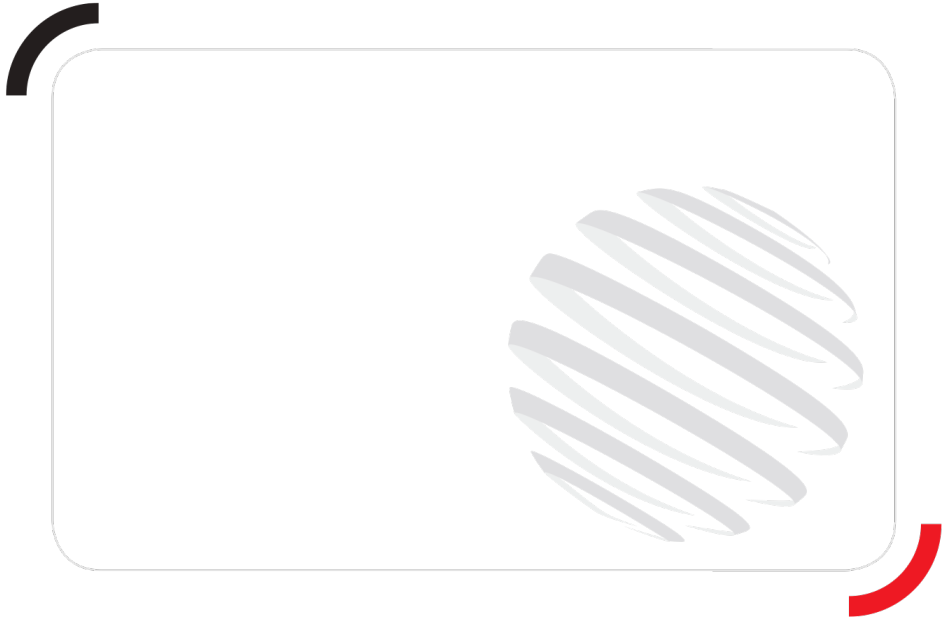
Onboard generator (3,5 or 5 kW)

Personalized paintwork

Refinery kit

Safety harness

SMS : Safe Man System



Siège Social
430 rue de l'Aubinière - 44150 Ancenis Cedex - France
Tel: +33(0)2 40 09 10 11 - Fax: +33 (0)2 40 09 10 97
www.manitou.com



This brochure describes versions and configuration options for Manitou products which may be fitted with different equipment. The equipment described in this brochure may be standard, optional or not available depending on version. Manitou reserves the right to change the specifications shown and described at any time and without prior warning. The manufacturer is not liable for the specifications given. For more information, contact your Manitou dealer. Non-contractual document. Product descriptions may differ from actual products. List of specifications is not comprehensive. The logos and visual identity of the company are the property of Manitou and may not be used without authorisation. All rights reserved. The photos and diagrams contained in this brochure are provided for information only.

MANITOU BF SA - Limited company with board of directors - Share capital: 39,547,824 euros - 857 802 508 RCS Nantes