

Technical sheet

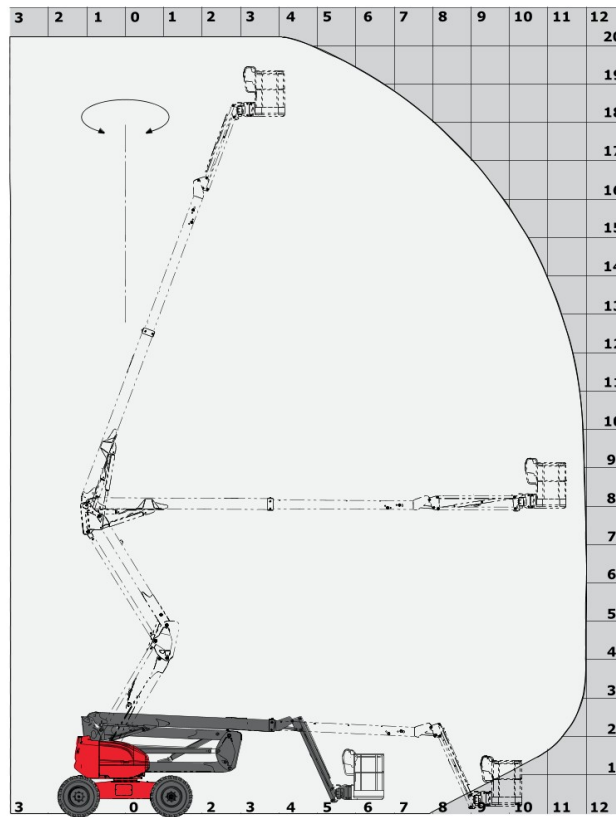
200 ATJ

Aerial Work Platforms Diesel Articulated Jib

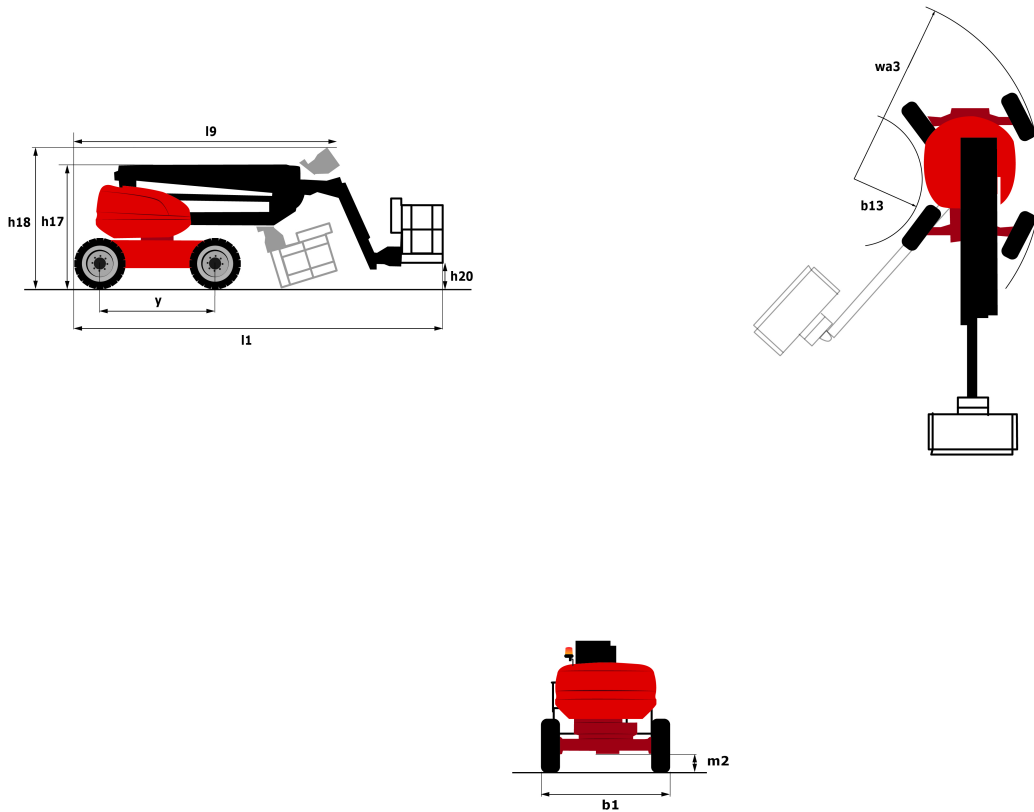


Capacities	Metric	Imperial
Working height	20.28 m	66 ft 7 in
Platform height	18.28 m	60 ft
Horizontal outreach	12 m	39 ft 4 in
Overhang	8 m	26 ft 3 in
Pendular arm rotation (top/bottom)	70 ° / -70 °	70 ° / -70 °
Platform capacity	230 kg	507 lbs
Turret rotation	355 °	355 °
Platform rotation (right/left)	90 ° / 90 °	90 ° / 90 °
Number of people (inside/outside)	2 / 2	2 / 2
Weight and dimensions		
2.1 - Platform weight*	10050 kg	22156 lbs
2.2 - Platform dimension (L x l)	2.1 x 0.8 m	6ft 11in x 2ft 7in ft
b1 - Overall width	2.40 m	7 ft 10 in
l1 - Overall length	8.42 m	27 ft 7 in
l9 - Overall length (folded)	6.51 m	20 ft 8 in
h17 - Overall height	2.71 m	8 ft 10 in
h18 - Overall height (folded)	2.85 m	9 ft
h20 - Floor height (access)	0.40 m	1 ft 5 in
l13 - Pendular arm length	2 m	6 ft 8 in
a7 - Counterweight offset (turret at 90°)	0.11 m	5 in
b13 - Inner turning radius	1.53 m	5 ft
wa3 - Outer turning radius	4.17 m	13 ft 8 in
m2 - Ground clearance at center of frame	0.44 m	1 ft 5 in
y - Wheelbase	2.40 m	7 ft 10 in
Performances		
Travel speed	4.70 km/h	2.90 mph
Working speed	0.80 km/h	0.50 mph
Gradeability	40 %	40 %
Permissible leveling	5 °	5 °
Tires		
Type of tires	TyresType.SolidTyres.cured-on	TyresType.SolidTyres.cured-on
Drive wheels (front/rear)	2 / 2	2 / 2
Steering wheels (front/rear)	2 / 2	2 / 2
Braking wheels (front/rear)	0 / 2	0 / 2
Engine		
I.C. engine	Kubota V2403-M Stage 3A	Kubota V2403-M Stage 3A
I.C. Engine power rating	45 hp / 34.10 kW	45 hp / 34.10 kW
Miscellaneous		
Ground pressure	20.45 daN/cm ²	290 psi
Maximum available hydraulic pressure	335 bar	4858 psi
Capacity of hydraulic tank	80 l	21.13 US gal.
Capacity of fuel tank	78 l	20.60 US gal.
Vibration level	<0.50 m/s ²	<0.50 in/s ²
Daily consumption**	7.96 l	2.10 US gal.

* varies according to options and standards of the country to which the machine is delivered
** According to "REDUCE cycle"



Dimensional drawing



Equipment

Standard

20" tyres

230V Predisposition

4 simultaneous movements

4 wheel drive

4 wheel steer with crab mode

Active oscillating front axle

Audible alarm and illuminated indicator lamp (leveling, overload, lowering)

Backup electrical pump

CAN bus technology

Dead man pedal

Differential locking on rear axle

Emergency stop button in platform and on frame

Engine on swivel chair

Optional

110 or 230V plug with differential circuit-breaker

Air predisposition

Beep on every movement

Beep upon travel

Biodegradable oil

Catalytic cleaner

Coded anti-start

Continuous turret rotation



Siège Social
430 rue de l'Aubinière - 44150 Ancenis Cedex - France
Tel: +33(0)2 40 09 10 11 - Fax: +33 (0)2 40 09 10 97
www.manitou.com



This brochure describes versions and configuration options for Manitou products which may be fitted with different equipment. The equipment described in this brochure may be standard, optional or not available depending on version. Manitou reserves the right to change the specifications shown and described at any time and without prior warning. The manufacturer is not liable for the specifications given. For more information, contact your Manitou dealer. Non-contractual document. Product descriptions may differ from actual products. List of specifications is not comprehensive. The logos and visual identity of the company are the property of Manitou and may not be used without authorisation. All rights reserved. The photos and diagrams contained in this brochure are provided for information only.

MANITOU BF SA - Limited company with board of directors - Share capital: 39,547,824 euros - 857 802 508 RCS Nantes