



**ROTO 50.35 S Plus**

**ROTO 70.28 S Plus**



**PERFORMANCE AND FEATURES**
**ROTO 50.35 S Plus**
**ROTO 70.28 S Plus**
**PERFORMANCE**

Total unladen weight (kg)

23350

23000

Maximum capacity (kg)

4950

7000

Lifting height (m)

34

28

Maximum reach (m)

27

23,2

Maximum operating height (m)

13,9

10,3

Maximum operating reach (m)

10,1

6,7

Capacity at maximum height (kg)

2000

3000

Capacity at maximum reach (kg)

500

850

Lateral boom movement (mm)

-

-

Tilting correction (%)

 $\pm 12; \pm 4$ 
 $\pm 12; \pm 4$ 

Boom sections

5

4

**POWERTRAIN**

Turbo motor

FPT NEF45

FPT NEF45

Displacement/cylinders

4500/4

4500/4

Engine Power (kW/HP)

125/170

125/170

Anti-pollution technology

STAGE IV, SCR+DOC

STAGE IV, SCR+DOC

Reversible fan

-

-

Maximum speed (km/h)

40

40

Fuel tank (l)

150

150

AdBlue tank (l)

43

43

Hydrostatic transmission

CVTronic

CVTronic

EPD

●

●

Axles

Axial

Axial

Reduction hub

Epicyclic

Epicyclic

Machine brakes

Wet discs

Wet discs

Automatic parking brake

●

●

**HYDRAULIC**

Hydraulic pump

2 - LS + FS

2 - LS + FS

Flow rate/pressure (l/min – bar)

158+100 / 260

158+100 / 260

Hydraulic tank

220

220

Hydraulic outlet at the top of the boom

●

●

Rear hydraulic outlets

-

-

**CAB**

Cab configuration

Premium

Premium

MCDC

-

-

FOPS LIV II cab

●

●

ROPS cab

●

●

Cab commands

Electronic joystick control

Electronic joystick control

Tilting Cab

●

●

Reverse shuttle

Dual Reverse

Dual Reverse

**CONFIGURATION**

Cab suspension

-

-

Boom suspension

○

○

Suspension on axles

●

●

Work headlights on cab

●

●

Sun blind

●

●

Tac-lock

●

●

Provision for a platform

●

●

Two floating forks

●

●

Inching-Control

-

-

Four-wheel drive

●

●

Four-wheel steering

●

●

Three steering modes

●

●

Standard tyres

445/80 R 25

445/80 R 25

Optional tyres

-

-

Stabilisers

Multiposition

Multiposition

Turret rotation

continuous

continuous

Type approval as an agricultural tractor

-

-

Approval with PNEUMATIC braking

-

-

Approval with HYDRAULIC braking

-

-

PTO

-

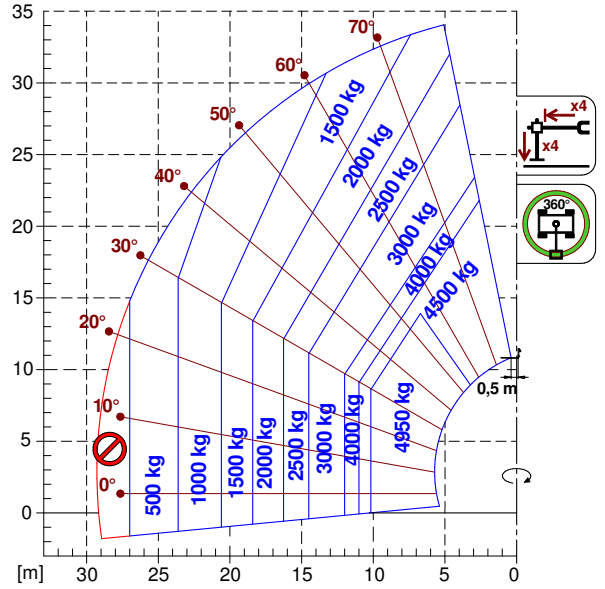
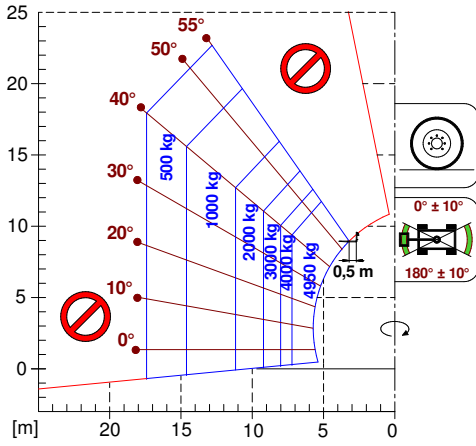
-

3-point linkage

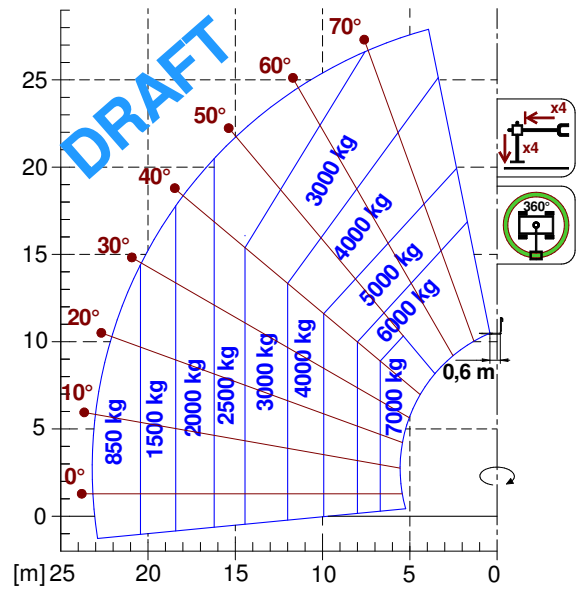
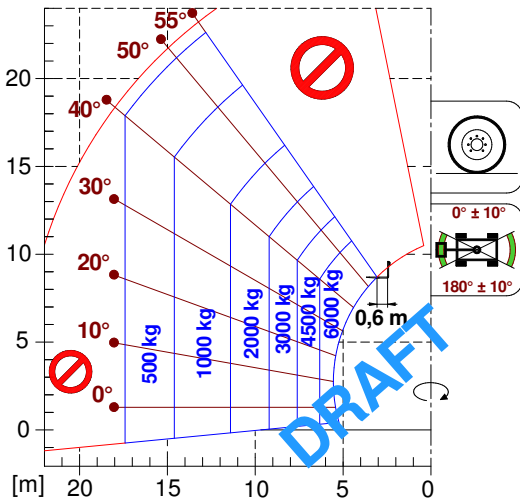
-

-

## LOAD CHARTS



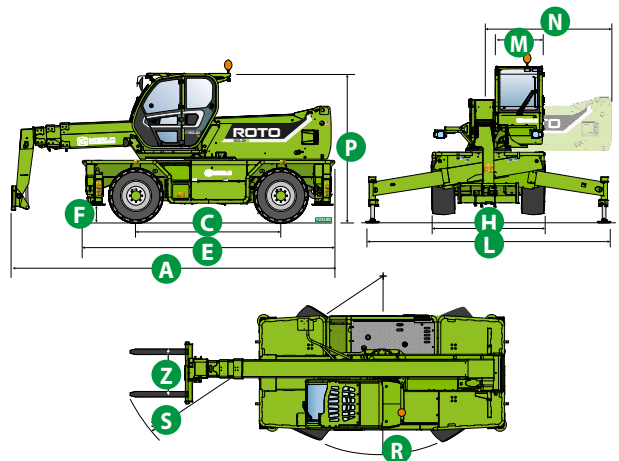
ROTO50.35



ROTO70.28

## DIMENSIONS

	ROTO 50.35	ROTO 70.28	
A (mm)	8590	8330	
C (mm)	3780	3780	
E (mm)	6910	6910	
F (mm)	315	315	
H (mm)	2490	2490	
L (mm)	6320	6320	
M (mm)	1010	1010	
N (mm)	3690	3690	
P (mm)	3330	3330	
R (mm)	4840	4800	
S (mm)	7130	7000	
Z (mm)	850	850	



## GLOSSAR

<b>SCR</b>	<b>Selective Catalyst Reduction</b> , solution used for the reduction of NOx in the exhaust gases through the injection of a liquid - UREA (AdBlue) - into the exhaust gases.
<b>DPF</b>	<b>Diesel Particulate Filter</b> , a solution used to reduce fine particle emissions in exhaust gases
<b>DOC</b>	<b>Diesel Oxidation Catalyst</b> , a solution used to reduce carbon monoxide (CO) and hydrocarbons in exhaust gases
<b>EGR</b>	<b>Exhaust Gas Recirculation</b> , a solution used to reduce NOx in exhaust gases by recirculating gas inside the combustion chamber of the engine.
<b>1-2V</b>	1 or 2 speed <b>Merlo gearbox</b>
<b>CVTronic</b>	<b>Continuous variation Merlo gearbox</b> , for constant acceleration without loss of torque
<b>EPD</b>	<b>Eco Power Drive</b> , Merlo electronically-controlled hydrostatic transmission Electronic, enables effective RPM management in order to reduce overall fuel consumption by the machine
<b>EPD Plus</b>	In addition to the <b>EPD</b> Control, it is also possible to work using Speed Control (maintaining a constant travel speed) and Heavy Load (management of RPM in order to maximise performance for tasks such as: bucketing operations, heavy duty unloading, etc.)
<b>EPD Top</b>	In addition to the <b>EPD Plus</b> control function, this enables the RPM to be managed directly using the joystick
<b>Gear</b>	<b>Fixed displacement pump with gears</b> , combined with an open centre hydraulic distributor
<b>LS</b>	Variable displacement pump with <b>Load Sensing</b> control, combined with a closed centre hydraulic distributor
<b>LS+FS</b>	Variable displacement pump with <b>Load Sensing</b> control, combined with a closed centre hydraulic distributor equipped with solenoid valves and <b>Flow Sharing</b> control.
<b>Kabine ECO/PREMIUM</b>	<b>MODULAR</b> type cabin with simplified or PREMIUM equipment
<b>MCDC</b>	Merlo Dynamic Load Control, electronic control of the machine's anti-overturn system. • <b>Light</b> : Simplified version; • <b>Complete</b> : Version with display in cab.
<b>FOPS</b>	Falling object protective structure, the system which shields the operator from heavy objects falling onto the cab. Two levels: • <b>FOPS Liv I</b> : Object with a weight of 45 kg falling from 3 metres • <b>FOPS Liv II</b> : Object with a weight of 227 kg falling from 5.2 metres
<b>ROPS</b>	<b>Roll-over protection system</b> (or roll-over protection structure), the system that protects the operator if the vehicle rolls over
<b>Finger Touch</b>	Driving direction inversion system mounted on the steering column
<b>Dual Reverse</b>	Dual driving direction inversion system, on both the steering column and the joystick
<b>Tac-lock</b>	Hydraulic attachment clamping system controlled from the cab



### MERLO S.P.A.

Via Nazionale, 9  
12010 S. Defendente di Cervasca  
(Cuneo) Italia  
Tel. +39 0171 614111  
Fax +39 0171 684101

[info@merlo.com](mailto:info@merlo.com)  
[www.merlo.com](http://www.merlo.com)

